

The famous

CARCRAFT

FOLDING CENTER SEAT



**FITS RIGHT
STAYS RIGHT**

**THE
ONE
ACCESSORY**

THAT ALL JEEP OWNERS WANT

SEE REVERSE SIDE FOR DETAILS

Carson

Machine & Supply Company

200 SOUTH EAST 29TH ST.

OKLAHOMA CITY 9, OKLAHOMA

BOX 4547

Features of the

CARCRAFT

FOLDING CENTER SEAT



**HEIGHT AND DEPTH SAME
AS STANDARD JEEP SEATS**

**TAPERED CUSHIONS FOR
RIDING COMFORT**

**EASY TO INSTALL OR REMOVE
SNAPS INTO PLACE IN A MINUTE
NO TOOLS REQUIRED**

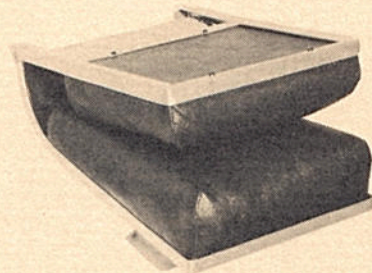
●
**HINGED $\frac{3}{4}$ " HEAVY ALUMINUM
ANGLE FRAMES**

●
**UTILITY POCKET REINFORCED
WITH SHEET ALUMINUM BACK**

●
**TAILORED IN SAME DURABLE
LEATHER FABRIC AND COLORS
AS STANDARD JEEP SEATS**

●
WEIGHT APPROXIMATELY 10 LBS.

●
**FORWARD FOLDING PERMITS
EASY ACCESS TO REAR**



Carson

Machine & Supply Company

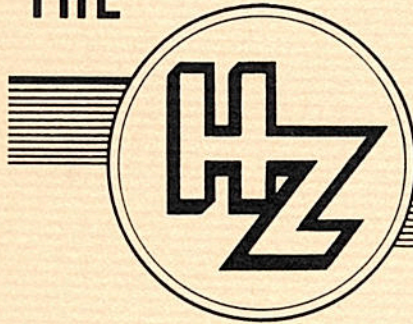
200 SOUTH EAST 29TH ST.

OKLAHOMA CITY 9, OKLAHOMA

BOX 4547

H & Z ALL-PURPOSE MIXER

THE



ALL-PURPOSE MIXER

FARMERS • CONTRACTORS • MASONS • HOME OWNERS

Savings From Use Far Exceed Nominal Cost

Efficient Design Assures Satisfaction

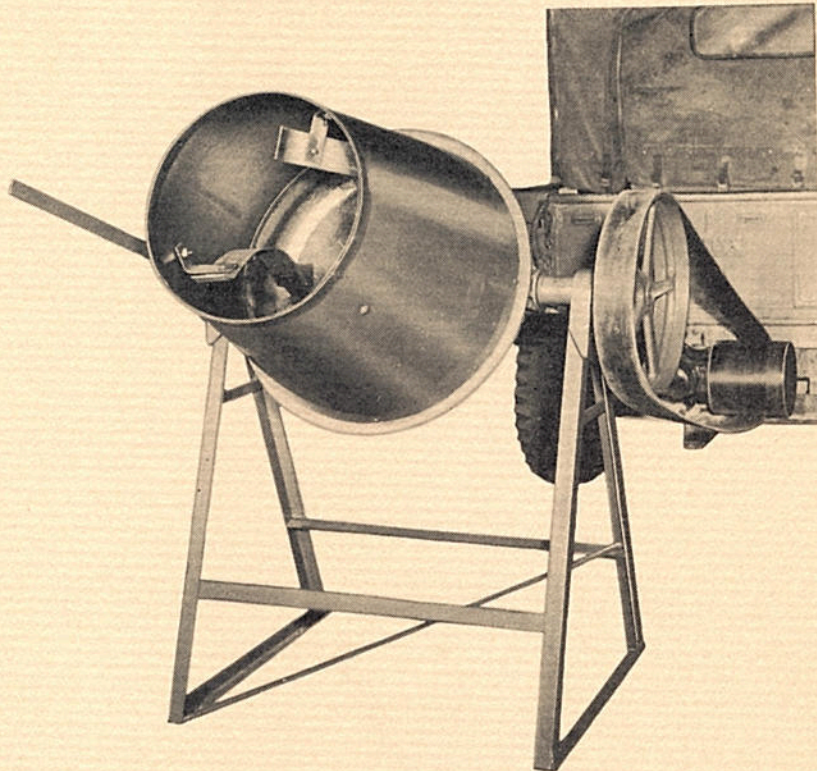
Engineered for

- Continuous
- Profitable
- Operation,
- Long Wear

Improved Design

Conveniently

- Operated
- Transported
- Cleaned
- Stored



HERTZLER & ZOOK PRODUCTS

Belleville, Penna.

H & Z ALL-PURPOSE MIXER

The H & Z Mixer has long been recognized for its quality and performance. Its size makes it popular with all classes of users. This low cost implement quickly pays for itself—often on the first job to which it is put.

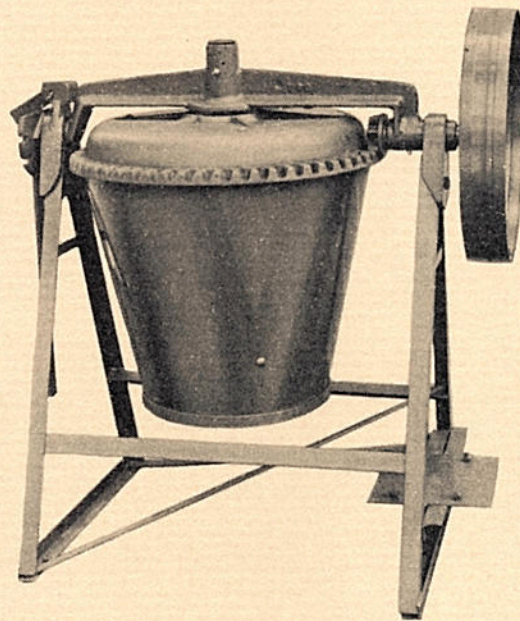
Always in demand

. . . . Use an H & Z mixer

**Bowl Can Hang
Inside Frame**

**Heavy Duty
Construction**

**Reinforced Castings
And Frame**



**Rigid, Welded
Angle Iron Frame**

**Well Balanced
Design**

**Holes in Base
For Attaching**

SPECIFICATIONS

DRUM: 23" diameter, 28" deep, heavy gauge steel and bowl of heavy cast iron, 3 paddles for mixing.

OPENING: 16½" opening for easy loading and dumping, reinforced lip.

FRAME: Electro welded, steel, sturdily braced, allows vertical hanging of drum.

BEARINGS: Heavy duty anti-friction on drum, bab-bitt lined on yoke shaft, Zerk fittings.

CAPACITY: 2½-3 cubic feet, quarter bag mixer.

PLATFORM: Welded steel plate, available for either gasoline engine or electric motor upon request.

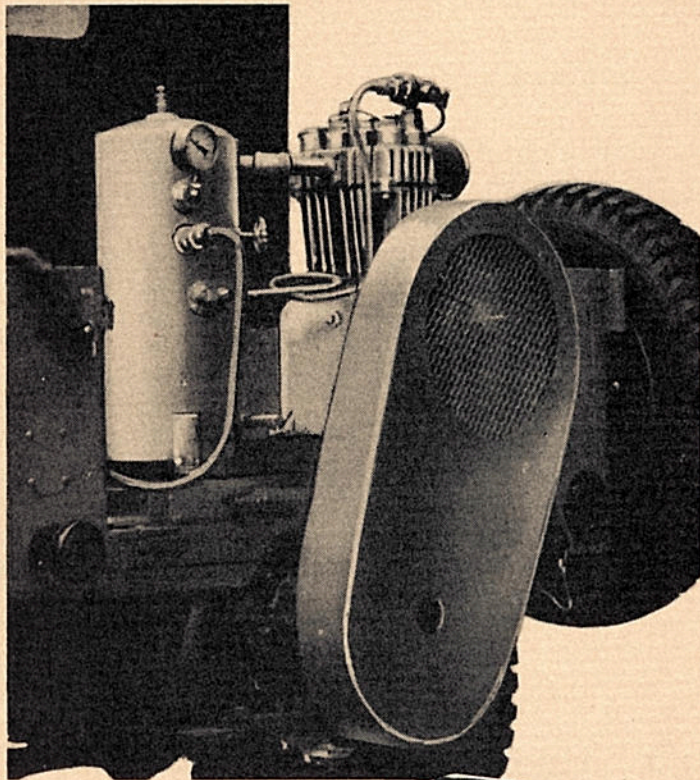
PULLEY: 16"x3" cast iron supplied as standard equipment with wood handle, 20"x3" supplied if ordered with motor.

POWER REQUIRED: 1/3 H.P. electric motor or 1/2 H.P. gasoline engine minimum.

HERTZLER & ZOOK PRODUCTS

Belleville, Penna.

The new model 216-S



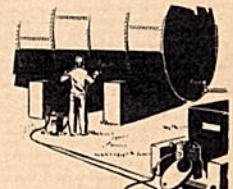
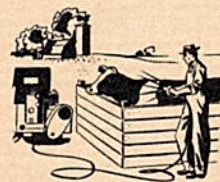
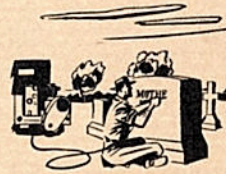
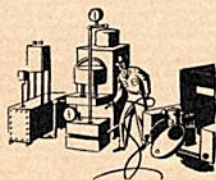
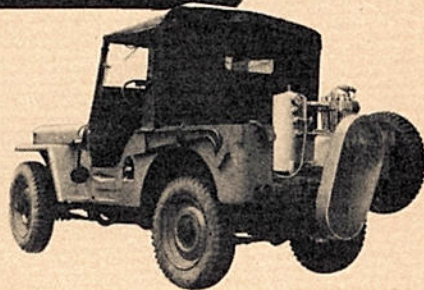
Quincy
COMPRESSORS

FOR MOUNTING ON
Willys-Overland **'Jeep'**

Use Compressed Air — ANYWHERE — any place a Jeep can travel, with the new Quincy Model 216-S Compressor. It is the same compressor with special valves in the cylinder head that was, and still is, being used by the U. S. Army Engineer Corps for the inflation of pneumatic bridge floats and on portable paint spray equipment for camouflage and D.D.T. spraying.

Any "Jeep" equipped with a power take-off becomes a portable air compressor unit simply by sliding the Quincy Compressor Model 216-S into the slots vacated by the rear seat. The entire assembly can be Jeep-installed by anyone in less than thirty minutes without the use of special tools or special knowledge.

The Quincy Compressor Model 216-S for Jeep mounting is of rugged construction and designed to withstand the hard usage and road shock it may be required to take "going ANYWHERE" with a "Jeep". For specifications see other side of this page.



FOR FURTHER DETAILS WRITE

QUINCY COMPRESSOR CO.
Quincy, Illinois

Branch Offices: New York • Chicago • San Francisco • St. Louis



WILLYS-OVERLAND EQUIPMENT BOOK

Quincy
COMPRESSORS

model 216-S for mounting on

'Jeep'

SPECIFICATIONS

TYPE Model 216-S is a vertical air cooled single stage compressor with duplex cylinders.

PRESSURE Maximum continuous pressure 80 lbs. per square inch.

BORE AND STROKE 3" bore, 2½" stroke.

PISTONS Light weight semi-steel fitted with three compression rings and one oil control ring.

CRANKSHAFT Drop forgings, 1045 S.A.E. steel, heat treated. Perfectly balanced, having integral counterweights.

RODS Lynite — with bi-metal precision insert bearings on crank-pin end.

VALVES Ring type made of special valve steel. Each valve removable for inspection without disturbing other valves.

CYLINDER Cast enbloc of nickel chrome alloy iron. Deep vertical fins insure heat dissipation. Cylinder cast separate from crankcase.

CYLINDER HEAD Nickel chrome alloy iron. Cast separate from cylinder.

BEARINGS Timken main bearings.

LUBRICATION Constant oil level type.

CRANKCASE Totally enclosed dust-proof type, fitted with automatic breather valve.

COOLING Accomplished by blast of air from combination fan and fly-wheel directed upward along the cylinder by deep vertical fins.

DRIVE Multiple V-belt.

OPERATING SPEED Maximum 1200 RPM — Minimum 400 RPM.

PISTON DISPLACEMENT 24.5 C.F.M. at maximum speed. 8.1 C.F.M. at minimum speed.

UNLOADER Quincy Type VD to regulate pressure from a minimum of 40 lbs. to a maximum of 80 lbs. Standard pressure setting 70 lbs. cut in — 80 lbs. cut out.

AIR CLEANER Each unit is provided with an Air Maze Inlet Filter to filter out all dust and foreign matter from compressor intake.

AIR RECEIVER The air receiver with which this unit is provided is equipped with a pressure gauge, safety valve, drain cock and tank shut-off valve — all located so as to be easily accessible.

INSTALLATION

Compressor and tank assembly are mounted on a substantial steel base.

1. Remove rear seat of Jeep and slide complete unit into seat slots.
2. Attach power take-off pulley and the two V-belts furnished.
3. Fasten belt guard to bracket (A Quincy Safety Feature).
4. Fill compressor crankcase with lubricating oil, and the Quincy Compressor is ready for operation.



Performance... **BACKED BY NATIONWIDE AUTHORIZED SERVICE**

To assure greater satisfaction of Quincy Compressor users, careful attention has been devoted to setting up Authorized Service Depots on a nationwide basis. Adequate stocks of genuine parts for the wide range of sizes and types of compressors manufactured by the Quincy Compressor Co., are maintained at these Depots. Quincy users, whether in their own plant or as part of a product, are assured of prompt, dependable service.

Quincy
COMPRESSORS

QUINCY COMPRESSOR CO.

Quincy, Illinois

Quincy
COMPRESSORS

Branch Offices: New York • Chicago • San Francisco • St. Louis