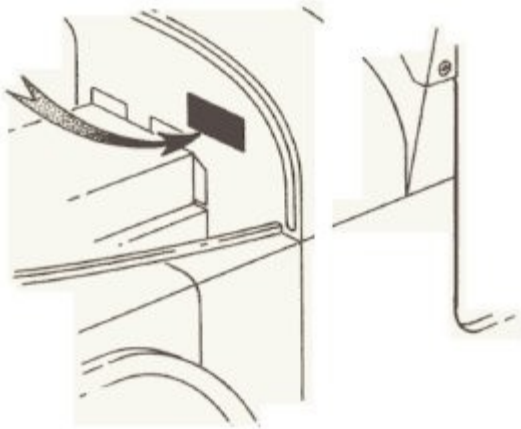


## VEHICLE IDENTIFICATION

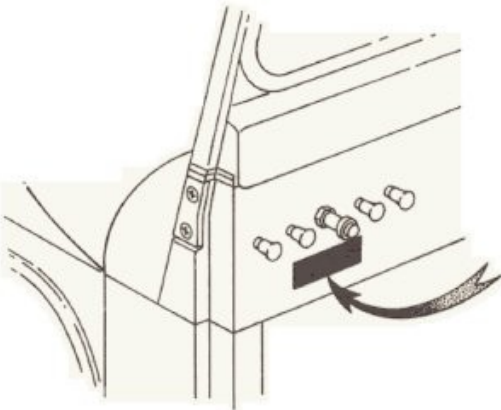
This document is intended to help identify Willys, Kaiser, and AMC Jeep CJ5 vehicles. Information contained herein was compiled from the Jeep parts manual, Jeep service manual, and various locations on the web and is NOT GUARANTEED TO BE ACCURATE.

Vehicle identification numbers can be located in the following four locations on early CJ5s:

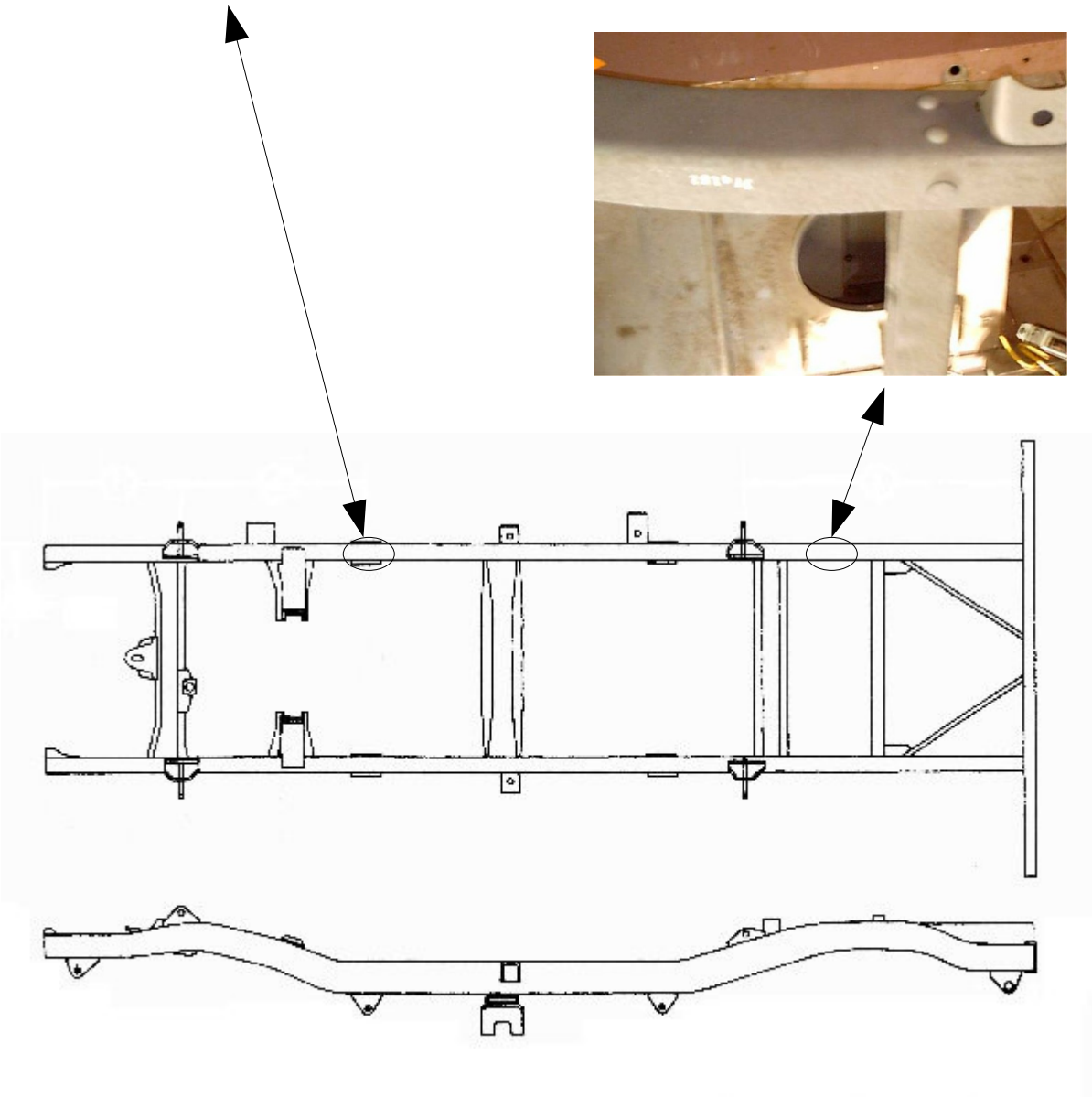
Stamped on a plate attached to the upper left corner of the firewall inside the engine compartment.



Decal affixed to the instrument panel.



Sequential Serial Number stamped on the top of the passenger side frame rail above the front axle rear spring hanger, and above the rear axle.



## DECODING THE VEHICLE IDENTIFICATION NUMBER

The Vehicle Serial Number consists of two groups of digits. The first group of digits identify Chassis Code, Body Style, Special Model Code, Drive Code and Engines. The remaining five (5) digits on earlier models, or six (6) digits on post 1972 models, indicate the Sequential Serial Number.

1971 And Prior

VEHICLE IDENTIFICATION NUMBER — This number is decoded as follows:

FIRST and SECOND DIGIT	Chassis Code	'57' Universal (Ref. Table 1) '81' Universal CJ-3B '83' Universal CJ-5 '84' Universal CJ-6 '85' Universal DJ-5 '86' Universal DJ-6 '87' Jeepster C101
THIRD and FOURTH DIGIT	Body Style	'01' Convertible (Jeepster) '02' Commando Convertible (Jeepster) '04' Fire Engine (Universal - Ref. Table 1) '05' Open Body '10' Open Body (Universal - Diesel) '22' Tuxedo Park Mark IV (Universal) '23' Fire Engine (Universal) '34' Open Body (Universal – CJ-3B) '54' Open Body (Universal - CJ-5 Except Diesel) '55' Open Body (Universal - CJ-5 Diesel) '74' Open Body (Universal - CJ-6 Except Diesel) '75' Open Body (Universal – CJ-6 Diesel)
FIFTH DIGIT	Body Style / Special Model Code	'A' V6-225 Engine 'C' Canadian Built 'F' Station Wagon (Jeepster) 'H' Pick-Up (Jeepster) '0' Universal (Disregard) '0' Roadster Open Body (Jeepster) 'S' Smog (Universal) '8' Universal (Ref. Table 1)

NOTE: Discontinue designator A and S with the inception of the (7) digit serial number prefix.

SIXTH DIGIT	Drive Code	'1' Left Hand Drive '2' Right Hand Drive '3' LHD California, Fuel Evap Control
-------------	------------	--

NOTE: Not applicable to Fire Engine.

SEVENTH DIGIT / Engine Code	'4' F4-134 Without Emission '5' F4-134 With Emission '6' V6-225 Without Emission '7' V6-225 With Emission
-----------------------------	--

NOTE: Not applicable to Fire Engine.

EIGHTH thru THIRTEENTH DIGIT	Sequential Serial Number
------------------------------	--------------------------

1972 VEHICLE IDENTIFICATION NUMBER — This number is decoded as follows:

FIRST DIGIT	Make	‘J’ for Jeep American Motors
SECOND DIGIT	Year	‘2’ for 1972
THIRD and FOURTH DIGIT	Series	‘83’ Universal 84” Wheelbase - 4 Wheel Drive ‘84’ Universal 104” Wheelbase - 4 Wheel Drive ‘85’ Universal 81” Wheelbase - 2 Wheel Drive ‘86’ Universal 101” Wheelbase - 2 Wheel ‘87’ Jeepster 104” Wheelbase - 4 Wheel Drive
FIFTH DIGIT	Body Style	‘5’ Open Body ‘F’ Station Wagon - Full Cab (Jeepster) ‘H’ Pick-Up - Half Cab (Jeepster)
SIXTH DIGIT	Type	‘0’ Standard
SEVENTH DIGIT	Engine Type	‘A’ for 258 SIX Single Bbl. Carb.      ‘R’ for 134 F4 Single Bbl. Carb. ‘B’ for 258 SIX Single Bbl. Carb. (L/C)      ‘S’ for 225 V6 Two Bbl. Carb. ‘E’ for 232 SIX Single Bbl. Carb.      ‘T’ for 134 F4 Single Bbl. Carb. (L/C) ‘F’ for 232 SIX Single Bbl. Carb. (L/C)      ‘U’ for 225 V6 Two Bbl. Carb. (L/C) ‘H’ for 304 VS Two Bbl. Carb.
EIGHTH DIGIT / Plant of Manufacture		‘1’ Toledo ‘3’ Car Knockdown
NINTH thru THIRTEENTH DIGIT	- Sequential Serial Number	Starting with 00001

## Model Number Information

Universal (Open Body) 1962 thru 1971 Model No.	Model	Description	Beginning With Serial No.
57348	M606 (CJ-3B)	All	85318
8105	M606 (CJ-3B)	-	8105-135889 UP
57548	CJ-5 Universal	Except Diesel	10001
8305	CJ-5 Universal	Except Diesel	8305-217502 UP
57558	CJ-5 Universal	Diesel	10153
8310	CJ-5 Universal	Diesel	8310-10869 UP
8318	CJ-5 Universal S/T Chassis	-	8318-10523 UP
8322	CJ-5A Universal	-	8322-16943 UP
8505	DJ-5 Universal 2WD	-	8505-11619 UP
57748	CJ-6 Universal	Except Diesel	21102
8405	CJ-6 Universal	Except Diesel	8405-31437 UP
57748	CJ-6 Universal	Except Diesel	10101
57758	CJ-6 Universal	Diesel	10029
8410	CJ-6 Universal	Diesel	8410-10523 UP
8418	CJ-6 Universal S/T Chassis	-	8418-10103 UP
8422	CJ-6A Universal	-	8422-10395 UP
8605	DJ-6 Universal 2WD	-	8605-10649 UP
71051	M38A1 (Military)	-	7105-97127 UP
71261	M38A1 24 Volt (Export)	-	
72051	M170 (Military)	-	7205-14543 UP
9422	FJ-6A P.O.	-	9422-13073 UP
8701	C101 4WD Convertible	-	
8702	C101 4WD Commando Convertible	-	
8705-O	C101 4WD Open Body	-	
8705-F	C101 4WD Station Wagon	-	
8705-H	C101 4WD Pickup	-	
8801	C101 2WD Convertible	-	
8805	C101 2WD Open Body	-	
835	CJ-5 '72 and up		
845	CJ-6 '72 and up		

Table 1

## UNIVERSAL (Fire Engine)

UNIVERSAL (Fire Engine) Model No.	Beginning With Serial No.
57048-01	10102
57048-02	10101
57048-14	10005
8123	10106
8323	10104
8423	10012

CJ-5 Serial Numbers by Model Year

Year	CJ-5 Start / End Serial Numbers (57548)	CJ-5 S/T Chassis Start / End Serial Numbers (57648)	CJ-5 Fire Engine (57048-02)	CJ-5 C/WS (56548)	CJ-5 Diesel (57558)
1955	10001 / 27006	10001 / 10010	10001 / 10001		
1956	27007 / 45922	10011 / 10022	10002 / 10007	10001 / 10006	
1957	45923 / 68815	10023 / 10068	10008 / 10012	10007 / 10012	
1958	68816 / 82877	10069 / 10136	10013 / 10016	10013 / 10015	
1959	82878 / 97918	10137 / 10173	10016 / 10017	10016 / 10020	
1960	97919 / 119539	10174 / 10325	10018 / 10023		
1961	119540 / 134747	10326 / 10386			10001 / 10152
1962	134748 / 150042				
1963	150043 / 161019				
1964	161020 / 175721				
1965	175722 / 194162				
1966	194163 / 217501				
1967	217502 / ?				
1968	? / ?				
1969	? / ?				
1970	? / ?				
1971	? / ?				

CJ-5 Starting Serial Numbers by Month

Year	Jan.	Feb.	March	April	May	June	July	Aug.	Sept.	Oct.	Nov.	Dec.
1955												
1956												
1957												
1958												
1959												
1960	106801	108744	111176	113246	115045	116621	118348	119540	120645	122065	123946	125445
1961	126660	127531	128754	129841	131445	133092	133951	134748	135497	137053	138961	140945
1962	142465	143796	145393	147723	148155	148796	149395	150043	152032	152793	154853	155645
1963	156384	156935	157350	158065	158725	159072	159671	161020	161680	163529	165388	167060
1964	168803	170823	171947	172629	173167	174005	174909	175722	177704	179356	181460	183296
1965	185971	186563	188713	190241	191629	192826	193440	194163	196455	198041	200815	205094
1966	207841	208601	210199	211480	212747	215160	215888	217502	219495	221154	222994	224285
1967	225469	226549	227882	229977	230270	233064						
1968												
1969												
1970												
1971												

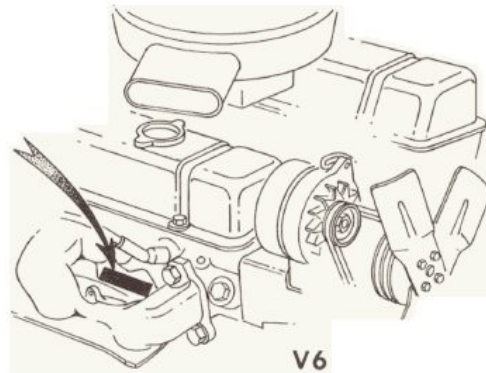
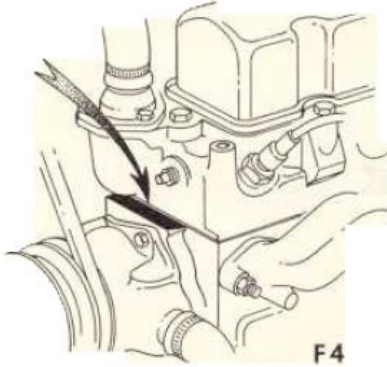
CJ-5 “The Lost Years” 1967 – 1971. This information was gathered from members of earlycj5.com

Serial Number	Month	Year	Registered As
241875	unknown	unknown	1967
244192	unknown	unknown	1968
248046	unknown	unknown	1969
351704*	September ??	1968	1969
357140*	unknown	unknown	1969
357830*	unknown	1969	1970
360577*	August	1969	1970
360996*	September	1969	1970
361439*	September	1969	1970
360663*	October	1969	1970
362713*	October	1969	1970
362833*	November	1969	1970
363224*	November	1969	1970
363364*	December	1969	1970
363463*	December	1969	1970
363649*	January	1969	1970
363711*	January	1969	1970
364411*	February	1970	1970
364465*	February	1970	1970
364511*	March	1970	1970
364613*	March	1970	1970
365141*	May	1970	1970
365339*	June	1970	1970
366313*	July	1970	1970
366671*	August	1970	1970
367612*	September	1970	1971
367901*	September	1970	1971
369357*	November	1970	1971
369673*	November	1970	1971
370239*	December	1970	1971
370390*	January	1971	1971
372559*	February	1971	1971
372843*	February	1971	1971
373249*	March	1971	1971
373446*	March	1971	1971
374123*	April	1971	1971
374908*	April	1971	1971
375285*	May	1971	1971
377699*	unknown	1971	1971

\* The first digit in the sequential serial number appears to indicate F4 (2) vs V6 (3).

## ENGINE CODES

F4-134; V6-225 ENGINE BUILD CODE — The F4-134 engine build code may be located on the water pump boss at the front of the cylinder head block. The V6-225 engine build code may be located on the right side of the cylinder block, just below the rocker arm cover, between exhaust manifold ports. On some 1965 and 1966 V6-225 engines, the letters “RU” or “RV” have been affixed to indicate Manual Shift or Automatic Shift respectively.



The Engine Code consists of three groups of digits with either alphabetic or numeric characters and may be interpreted as follows:

FIRST DIGIT	/ Market	M - Military E - Export D - Domestic I - Industrial
SECOND DIGIT	Year	“*” - F4 -134 L - 1965 V6-225 M - 1966 V6-225 N - 1967 V6-225 P - 1968 V6-225 R - 1969 F4-134 and V6-225 S - 1970 F4-134 and V6-225 T - 1971 F4-134 and V6-225

“\*” Prior to 1967 all F4-134 engine codes were marked 4J plus serial number

Engine	F - F4-134 H - V6-225 9.0 To 1 C.R. (2 Bbl. Carb.) Y - V6-225 9.0 To 1 C.R. MARINE (Low Profile) (2 Bbl. Carb.) Z - V6-225 9.0 To 1 C.R. MARINE (High Profile)(2 Bbl. Carb.) K - V6-225 7.6 To 1 C.R. (2 Bbl. Carb.) K - V6-225 7.4 To 1 C.R. (2 Bbl. Carb.)
--------	---

FOURTH thru SIXTH DIGIT Day of Year Built, plus Change if any

SEVENTH DIGIT	/ Undersize Crank and Rod Bearings .010 oversize	/ A
	/ Bores – Pistons .010 Oversize	/ B
	/ Main Bearings .010 undersize F4-134 only	/ M
	/ Connecting Rod Bearings .010 undersize F4-134 only	/ P

Seventh digit shown only if applicable to other than standard.



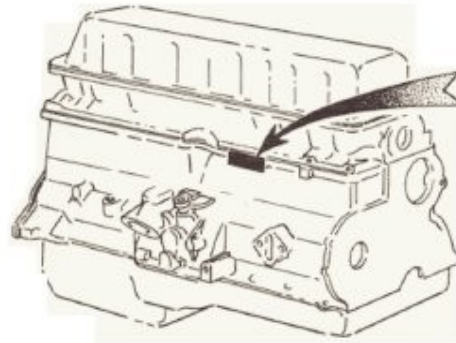
SEVENTH and EIGHTH DIGIT .010 undersize Crankshaft Main and Connecting Rod Bearings and with .010 oversize Bores in Cylinder Block AB

Seventh and eight digit shown only if applicable to other than standard.

NINTH DIGIT / Service Engine / "S"  
Or  
/ Short Block "R"

TENTH and ELEVENTH DIGIT / Compression Ratio F4-134 only / 60 - 6.0 to 1  
/ 63 - 6.3 to 1  
/ 67 - 6.7 to 1  
/ 71 - 7.1 to 1

232 - 258 ENGINE BUILD CODE — The 232 and 258 OHV Engine Build Code is located at the center, upper right side of the engine block.



The Engine Code consists of six digits with either alphabetical or numerical characters, and may be interpreted as follows:

FIRST DIGIT	Year	4 - 1971 5 - 1972
SECOND and THIRD DIGIT	Month	
FOURTH DIGIT	Type	A - SIX-258 Single Bbl. Carb. 8.0 To 1 B - SIX-258 Single Bbl. Carb. 7.6 To 1 (L/C) E - SIX-232 Single Bbl. Carb. 8.0 To 1 F - SIX-232 Single Bbl. Carb. 7.5 To 1
FIFTH and SIXTH DIGIT	Day of Month	

V8-304 ENGINE BUILD CODE - This code is stamped on a metal tag and is located on the front of the right Valve Cover.

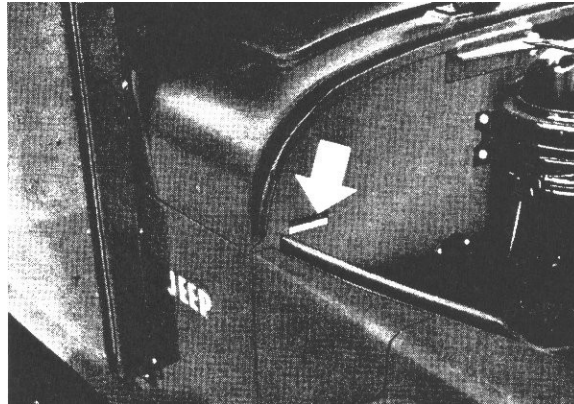


The Engine Code consists of six digits with either alphabetical or numerical characters, and may be interpreted as follows:

FIRST DIGIT	Year	4 - 1971 5 - 1972
SECOND and THIRD DIGIT	Month	
FOURTH DIGIT	Ratio	H - V8-304 Two Bbl. Carb. 8.4 to 1
FIFTH and SIXTH DIGIT	Day of Month	

## PAINT OR TRIM

Vehicles have a Paint and Trim Option Plate usually affixed to the engine side of the dash panel on the right hand side of the vehicle. This option plate should be utilized to determine paint colors to be used and for ordering trim parts for vehicles having the option plate attached.



The part number of the part desired, along with the part description and trim option number, should be shown on order for all trim parts.

Paint or Trim Option 999 designates special paint or trim, therefore the vehicle serial number should be supplied.

## EXTERIOR PAINT

PAINT is not available from the factory. All the colors shown in the following chart, are available from your local ACME, DITZLER, DUPONT and RINSHED-MASON paint jobber by requesting the intermix formula shown in the Intermix Number Chart.

To determine the paint manufacturer's intermix formula for a particular vehicle, proceed as follows:

1. Determine the paint option number from the Paint and Trim Option Plate on the vehicle.
2. Locate this number in the following chart to determine the name of the color on the vehicle, except for Paint Option 999. Option 999 indicates special paint. To obtain information on special paint, contact your Regional Parts and Service Manager and provide the Serial Number of the vehicle involved. (For reference use - - - SERVICE BULLETIN No. 864 dated November 18, 1966.)
3. After locating the Paint Option Number and the paint color name, the manufacturer's intermix formula is shown in either Lacquer (L) or Enamel (E) which is the paint letter used when ordering.

Included in the Intermix Chart are the Monotone Paint Options (Far Left Column). In the color column, (M) indicates Metallic and (2) indicates a second or later type.

1971 AND PRIOR

PAINT OPTION	COLOR		ACME	DITZLER	DUPONT	RINSHED MASON
21	Raven Black	L	509	DAL-9000	Stock #44	.....
		E	206	DQE-9000	Stock #93-005	.....
78	President Red (1)	L	7907	DAL-70549	2145-H	55Z51
		E	22-7907	DQE.70549	2145-H	255Z51
79	Steel Glow Gray	L	7906	DAL-31268	2146	55Z11
		E	22-7906	DQE-31268	2146	255Z11
81	Transport Yellow	L	7908	DAL-80020	83928	55Z72
		E	22-7908	DQE-80020	83928	255Z72
133	Bell System Green	L	.....	.....	.....	.....
		E	.....	DQE-42801	.....	.....
134	Olive Drab	L	1744	DAL-42955	(246)29149	U-3742
		E	22-1744	DQE-42955	(93)29149-H	2U-3742
135	Omaha Orange	L	1646	DAL-60281	83215-H	58W71
		E	22-1646	DOE-60281	83215-H	258W71
179	Plantation White	L	1725	DAL-8280	84201	60W92
		E	22-1725	DQE-8280	84201	260W92
221	GSA Gray (16440)	L	1723	.....	(253)91640	U-1047
		E	22-1723	DOE-3181 7	(93)91640	2U-1407
222	Sierra Blue	L	30-5005	DAL-12077	(246)96581	63W22
		E	22-5005	DQE-12077	(93)96581	.....
223	Nordic Blue (M)	L	30-5003	DAL- 12311	(202)96575	63W23
		E	22-5003	DQE-12311	(181)96575	.....
224	White Cap	L	30-5008	DAL-8345	(246)96580	63W91
		E	22-5008	DQE-8345	(93)96580	.....
225	Spruce Tip Green (M)	L	30-5006	DAL-43038	(202)96584-H	63W32
		E	22-5006	DQE-43038	(181)96584-H	.....
226	President Red (2)	L	30-5013	DAL-71334	(246)96578-H	63W51R
		E	22-5013	DQE-71334	(93)96578-H	.....
227	Jet Line Gray (M)	L	30-5002	DAL-32242	(202)96576	63W1 1
		E	22-5002	DQE-32242	(181)96576	.....
228	Parade Blue (M)(2)	L	.....	DAL-12611	(202)96579	63W21
		E	.....	DQE-12611	(181)96579-H	.....
229	Amber (M)(2)	L	30-5012	DAL-21930	(202)96577	63W81
		E	22-5012	DQE-21930	(181)96577	.....
230	Parkway Green	L	30-5004	DAL-43161	(246)96582	63W31
		E	22-5004	DQE-43161	(93)96582	.....
231	Tree Bark Brown (M)	L	30-5007	DAL-22260	(202)96583-H	.....
		E	22-5007	DQE-22260	(181)96583	.....
332	Indian Ceramic	L	.....	DAL-71248(Y)	(246)96598-H	63W52R
		E	.....	DQE-71248(Y)	(93)96598-H	.....
345	Transport Yellow	L	7908	DAL-80020	83928	55Z72
		E	22-7908	DQE-80020	83928	255Z72
347	Omaha Orange	L	1646	DAL-60281	93215-H	58W71
		E	22-1646	DQE-60281	83215-H	258W71
349	Raven Black	L	509	DAL-9000	Stock #44	.....
		E	206	DQE-9000	Stock #93-005	.....
351	Bell System Green	L	.....	.....	.....	.....
		E	.....	DQE-42801	.....	.....
384	Glacier White	L	60-8163	DDL-8633	(246)97998	66Z91
		E	22-8163	DQE-8633	(93)97998	266Z91

PAINT OPTION	COLOR		ACME	DITZLER	DUPONT	RINSHED MASON
385	Empire Blue	L	60-5132	DDL-13205	.....	66Z22
		E	22-5132	DOE-13205	(181)98054	266Z22
386	Olive Mist (M)	L	60-5134	DDL-43507	(202)98053-H	66Z31
		E	22-5134	DQE-43507	(181)98053	266Z31
388	Bronze Mist (M)	L	60-5133	DDL-22666	(202)98052	66Z81
		E	22-5133	DQE-22666	(181)98052	226Z81
389	Beechwood	L	60-5129	DDL-43471	(246)98000	66Z82
		E	22-5129	DQE-43471	(93)98000	266Z82
391	Indian Ceramic	L	.....	DAL-71248(Y)	(246)96598-H	63W52R
		E	.....	DQE-71248(Y)	(93)96598-H	.....
392	Spruce Tip Green	L	30-5006	DAL-43038	(202)96584-H	63W32
		E	22-5006	DOE-43038	(181)96584-H	.....
393	Gold Beige (M)	L	60-5131	DDL-22705	(202)98051	66Z71
		E	22-5131	DQE-22705	(181)98051	266Z71
394	Marlin Blue	L	60-5130	DOL-13156	(202)98001-H	66Z21
		E	22-5130	DQE-13156	(181)98001-H	226Z21
396	Glacier White	L	60-8163	DDL-8633	(246)97998	66Z91
		E	22-8163	DQE-8633	(93)97998	226Z91
398	President Red	L	30-5013	DAL-71334	(246)96578-H	63W51R
		E	22-5013	DQE-71334	(93)96578-H	.....
406	Glacier White	L	60-8163	DDL-8633	(246)97998	66Z91
		E	22-8163	DQE-8633	(93)97998	266Z91
408	Glacier White	L	60-8163	DDL-8633	(246)97998	66Z91
		E	22-8163	DQE-8633	(93)97998	266Z91
409	Indian Ceramic	L	.....	DAL-71248(Y)	(246)96598-H	63W52R
		E	.....	DQE-71248(Y)	(93)96598-H	.....
411	Empire Blue	L	60-5132	DDL-13205	.....	66Z22
		E	22-5132	DQE-13205	(181)98054	266Z22
412	Prairie Gold	L	60-16628	DDL-81535	(246)98216	66Z83
		E	22-16628	DQE-81535	(93)98216	266Z83
413	Prairie Gold	L	60-16628	DDL-81535	(246)98216	66Z83
		E	22-16628	DQE-81535	(93)98216	266Z83
431	Avocado Mist (M)	E	6077	44115	7316D	U-30054
432	Champagne White	E	6080	8818	7314D	U-9193
433	Spring Green	E	6079	44189	7318D	U-30053
434	Vintage Gold (M)	E	6078	23340	7317D	U-7005
435	Burnished Bronze (M)	E	6081	23315	7315D	U-8410
477	Island Blue (M)	E	6111	14068	7467D	70Z20
478	Candlelight Yellow	E	6095	81825	7468D	70Z70
		L	30-1710	DAL-12611	(202)96319	.....
	Parade Blue (M) (1)	E	22-1710	DQE-1261 1	(181)96319	.....

PAINT CODE NO.	COLOR NAME	DITZLER AIR DRY ENAMEL NO.	DUPONT AIR DRY ENAMEL DULUX* NO.	DITZLER DURACRYL ACRILYC LACQUER NO.	DUPONT LUCITE* ACRILYC LACQUER NO.
226	President Red	DQE71334	93-95678	DDL71334	6963H
431	Avocado Mist	DQE44115	73160	DDL44115	7316L
432	Champagne White	DQE8818	73140	DDL8818	7314L
490	Butterscotch Gold	DQE2399	54060	DDL2399	5406L
491	Julep Green Metallic	DQE44478	7663D	DDL44478	7663L
492	Jet Set Blue Metallic	DQE2392	5395D	DDL2392	5395L
493	Yuca Tan Metallic	DQE2397	54040	DDL2397	5404L
494	Skyway Blue	DQE2391	53940	DDL2391	5394L
495	Canary Yellow	0QE2266	52140	0DL2266	5214LH

TRIM CODES

Early 1960's

Code	Description
2	Slate Gray Fabric, Colonial Grain, Vinylite coated
12	Olive Drab, Vinylite Coated
13	Red Barcelona Fabric, Vinylite Coated
62	Dark Gray Toned Print Vinyl
H-87	Dark Gray Vinyl
H-89	Persian Gray Pincrush Vinyl
H-93	Honey Beige Pincrush Vinyl
N-19	Tropical Rose Crush Grain Vinyl, Tropical Rose and Coral Mist Striped Vinyl
N-20	Cerulean Blue Crush Grain Vinyl, Cerulean Blue and Glacier White Striped Vinyl
N-21	Jade Tint Crush Grain Vinyl, Jade Tint and Glacier White Striped Vinyl
N-33	Fountain Green Metallic Macombo Grain Vinyl
N-34	Peacock Blue, Macombo Grain Vinyl
N-35	Amber Metallic, Macombo Grain Vinyl
N-57	Pepsi-cola Yellow and Pepsi-cola Creamed Striped Vinyl
N-64	President Red, Macombo Grain Vinyl
N-72	President Red, British Calf Grain Vinyl (For Pleated Seats)
Y-33	Light Gray Toned Print Vinyl, Colt Hide Grain
Y-44	Black, White and Gray Plastastrand Burnished Antique Black Vinyl
Y-58	Light Gray Toned Print Vinyl and Granada Green Vinyl Coated Facing
Y-59	Light Gray Toned Print Vinyl and Gulf Blue Vinyl Coated Facing
Y-60	Light Gray Toned Print Vinyl and President Red Vinyl Coated Facing
Y-63	Black Burnished Antique Vinyl
Y-64	Black, White and Gray Plastastrand Black Dinosaur Vinyl
Y-92	Two-Toned Tawny Gray Breathable Ribbed Vinyl and Tawny Gray and Black Vinyl with Black Extruded trim welt

1962 – First Production Year

Code	Seat Type	Color & Material	Model
T-199	(WBS)(2/3 – 1/3)	Green Vinyl	Universal
T-200	(WBS)(2/3 – 1/3)	Blue Vinyl	Universal
T-201	(WBS)(2/3 – 1/3)	Amber Metallic Vinyl	Universal
T-224	(WBS)	Black Vinyl (Pleats)	Universal

1964 – First Production Year

Code	Seat Type	Color & Material	Model
T-225	(WBS)(2/3 – 1/3)	Green Vinyl (Pleats)	Universal
T-226	(WBS)(2/3 – 1/3)	Blue Vinyl (Pleats)	Universal
T-227	(WBS)(2/3 – 1/3)	Black Vinyl (Pleats)	Universal

1965 – First Production Year

Code	Seat Type	Color & Material	Model
T-245	(WBS)	Rawhide Vinyl	Universal
T-246	(WBS)	Blue Vinyl	Universal
T-247	(WBS)	Charcoal Vinyl	Universal
T-248	(WBS)	Red Vinyl (Pleats)	Universal
T-249	(2/3 – 1/3)	Rawhide Vinyl	Universal
T-250	(2/3 – 1/3)	Blue Vinyl	Universal
T-251	(2/3 – 1/3)	Charcoal Vinyl	Universal
T-253	(2/3 – 1/3)	Blue Vinyl	Universal
T-254	(2/3 – 1/3)	Charcoal Vinyl	Universal
T-255	(2/3 – 1/3)	Red Vinyl	Universal
T-263	(WBS)(2/3 – 1/3)	Green Vinyl	Universal
T-264	(WBS)(2/3 – 1/3)	Blue Vinyl	Universal
T-265	(WBS)(2/3 – 1/3)	Amber Vinyl	Universal
T-266	(2/3 – 1/3)	Rawhide Vinyl	Universal
T-267	(2/3 – 1/3)	Blue Vinyl	Universal
T-268	(2/3 – 1/3)	Charcoal Vinyl	Universal

1966 – First Production Year

Code	Seat Type	Color & Material	Model
T-245	(WBS)	Rawhide Vinyl	Universal
T-246	(WBS)	Blue Vinyl	Universal
T-247	(WBS)	Charcoal Vinyl	Universal
T-248	(WBS)	Red Vinyl (Pleats)	Universal
T-249	(2/3 – 1/3)	Rawhide Vinyl	Universal
T-250	(2/3 – 1/3)	Blue Vinyl	Universal

1968 – First Production Year

Code	Seat Type	Color & Material	Model
T-289	(WBS)	Rawhide Vinyl	Universal
T-290	(WBS)	Blue Vinyl	Universal
T-291	(WBS)	Charcoal Vinyl	Universal
T-292	(WBS)(2/3 – 1/3)	Olive Drab Vinyl	Universal
T-296	(WBS)	Red Vinyl (std.)	Universal

1970 – First Production Year

Code	Seat Type	Color & Material	Model
T-338	(WBS)	Buckskin Vinyl	Universal
T-339	(WBS)	Blue Vinyl	Universal
T-340	(WBS)	Charcoal Vinyl	Universal
T-341	(2/3 – 1/3)	Buckskin Vinyl	Universal
T-342	(2/3 – 1/3)	Blue Vinyl	Universal
T-343	(2/3 – 1/3)	Charcoal Vinyl	Universal

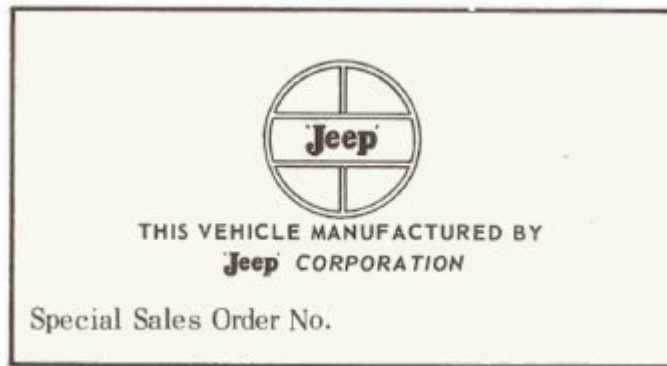


1972			
Code	Seat Type	Color & Material	Model
T-405	(WBS)	Buff Vinyl	Universal
T-406	(WBS)	Black Vinyl	Universal
T-407	(2/3 – 1/3)	Buff Vinyl	Universal
T-408	(2/3 – 1/3)	Black Vinyl	Universal
T-409	(WBS)	Olive Drab Vinyl	Universal
T-410	(2/3 – 1/3)	Olive Drab Vinyl	Universal
T-453	(WBS)	Buff Vinyl (Renegade)	Universal
T-454	(WBS)	Black Vinyl	Universal

1973			
Code	Seat Type	Color & Material	Model
T-421	(WBS)	Buff Vinyl	Universal
T-422	(WBS)	Black Vinyl	Universal
T-423	(WBS)	Olive Drab Vinyl	Universal
T-424	(2/3 – 1/3)	Buff Vinyl	Universal
T-425	(2/3 – 1/3)	Black Vinyl	Universal
T-426	(2/3 – 1/3)	Olive Drab Vinyl	Universal
T-496	(WBS)	White / Red Vinyl	Universal
T-497	(WBS)	White / Cinnamon Vinyl	Universal

1974			
Code	Seat Type	Color & Material	Model
T-422	(WBS)	Black	Universal
T-423	(WBS)	Olive Drab	Universal
T-425	(2/3 – 1/3)	Black	Universal
T-426	(2/3 – 1/3)	Olive Drab	Universal
T-498	(WBS)	Buff	Universal
T-499	(2/3 – 1/3)	Buff	Universal

1975			
Code	Seat Type	Color & Material	Model
T-422	(WBS)	Black	Universal
T-423	(WBS)	Olive Drab	Universal
T-425	(2/3 – 1/3)	Black	Universal
T-426	(2/3 – 1/3)	Olive Drab	Universal
T-498	(WBS)	Buff	Universal
T-499	(2/3 – 1/3)	Buff	Universal
T-500	(WBS)	Blue Levi Vinyl	Universal
T-501	(WBS)	Tan Levi Vinyl	Universal



**SPECIAL SALES ORDER NO.**

Vehicle equipment deviations by Dealers, to satisfy individual owner requests, have not been cataloged. However, to assist the Dealer in ordering replacement parts, for vehicles built by production with other than Standard Equipment, an identification plate is attached to the dash panel underneath the hood. On the majority of vehicles requiring this plate, only a minority of parts are peculiar. Usually, a Dealer will recognize which parts are non-standard on a particular series and model.

When ordering non-standard replacement parts for a vehicle having the aforementioned identification plate (See Illustration), please FURNISH THE FULL AND COMPLETE SPECIAL SALES ORDER NO. and a description of the parts required to the NATIONAL PARTS DISTRIBUTION CENTER ON FORM NO. F259 MR3.

When ordering standard replacement parts for this type of vehicle, enter your order in the usual manner to YOUR JEEP PARTS DISTRIBUTION CENTER. It will not be necessary to furnish the Special Sales Order No.